



Monday 11 April 2022

What's in your Partners in Care bulletin?

This weekly bulletin provides details of training, guidance, access to past editions and lots more. There's also helpful information on the web pages dedicated to our Independent Care Provider colleagues.

[Please click here to bookmark these pages](#)



Department
of Health &
Social Care

Department of Health and Social Care- COVID-19 Guidance for Adult Social Care Providers

The links for the two question and answer sessions held last week for care providers can be found below for those unable to attend (DHSC have been made aware of an error in sending the links which prevented some being able to access). Due to the number of questions raised they have undertaken to provide a set of written responses to frequently asked questions, which we will endeavour to share once available.

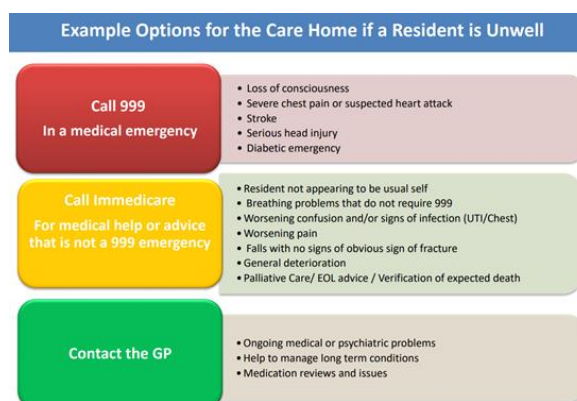
- [Care Home Briefing Session 06 April](#)
- [Non Care Home Providers Briefing Session 07 April](#)



National Patient Safety Alert- Potassium Permanganate

NHS England and NHS Improvement National Patient Safety Team and the British Association of Dermatologists have released a joint alert on the risk of inadvertent oral administration of potassium permanganate. There have been reports of patients ingesting potassium permanganate where: healthcare staff have inadvertently administered potassium permanganate orally; patients have mistakenly taken potassium permanganate orally at home, or when left on a bedside locker; or where potassium permanganate was incorrectly prescribed as oral medication. The alert asks to take action to assess if the benefit of using potassium permanganate outweighs the risk, and, if use is to continue, to ensure safer prescribing and labelling, and to ensure it is stored safely. For more information on the alert please follow this [link](#).

Need to know



Immedicare System Pressures Message

Providers who have access to the Immedicare Telemedicine system will have received a message due to the operational situation across the health and social care system has proved increasingly challenging in recent weeks. Hospital sites and ambulance services are now experiencing severe levels of pressure due to increased patient demand.

Given the current situation, we are encouraging that the Immedicare Telemedicine service is used as a clinical support for any urgent non-999 situations. A document is available giving examples of [when Immedicare can be used](#). In a medical emergency call 999 and follow the instructions given by the ambulance service call handler. Please note you can also call Immedicare for additional support and advice ahead of the paramedics arriving. Under these circumstances as part of the Immedicare response they will also liaise with the attending crew and help with handover of clinical details and patient condition.

Resources to Support Social Care Workers in Discussing Sexuality and Relationships

Skills for Care, in collaboration with Supported Loving, the Care Quality Commission (CQC) and the Department of Health and Social Care (DHSC), has conducted a learning materials review to provide social care staff in England with information on resources to best support people who draw on care and support with matters of sexuality and intimate relationships.

The review has now been completed and published on their [website](#), alongside:

- a supporting personal relationships guide
- a learning materials review database, cataloguing resources collated within the review
- an information video with Jim Thomas, Head of Workforce Capacity and Transformation at Skills for Care
- a podcast covering sexual safety through empowerment from the CQC.



Meet the Ambassadors Challenging Misconceptions Around what Living with a Learning Disability Looks Like

Mencap have produced a [short film of ambassadors challenging stereotypes](#) about what living with a learning disability looks like. Meet the cover model, the

athlete, the activist and many more. Why not use the film for a discussion with people who you support about what is possible or even make your own myth-busting film?



#Celebrating Social Care

During April, Skills for Care are celebrating the importance of social care. It's been two years since COVID-19 first spread in the UK and the country went into lockdown. Throughout these two years our social care sector has faced challenges never seen before, and the people working in social care have continued to adapt and show up to keep our communities safe and supported.

While they work hard to recognise and support the achievements of the social care sector year-round, this dedicated month is a time to encourage everyone to really take time to shout out the importance of social care and the dedication and skills of the people who work within it. They would love you to join in and 'shout out' your colleagues and partners or share something you're particularly proud of that you did during the pandemic via social media. So, during April, please share your own message or short video using #CelebratingSocialCare. You can follow this [link](#) for more ideas about how to take part.

Learning and Development Opportunities

Enhancing Care for Older People Webinar Series- 'Safe or Sedentary? Promoting physical activity with older people'

When: Tuesday 26 April 1.30-3.00

Academic Health Sciences Network for the North East and North Cumbria are hosting this webinar, linked to the Enhanced Care for Older People Competency Framework (EnCOP) The session will be delivered by Róisín



Skills for Care Webinar- Wellbeing Leadership

When: Wednesday 4 May 10.30-11.00

This webinar will focus on wellbeing leadership and what good looks like.

Fallen-Bailey, Physiotherapist
& HEE/NIHR Pre-Doctoral clinical
academic fellow at Newcastle upon
Tyne Hospitals NHS Foundation Trust

To register your place please follow this [link](#). The session is free and open to all.

They will share practical tips, tools
and ideas and you will also hear
from others on how they create a
wellbeing culture. You will have the
opportunity to help shape the
content of the webinar by
completing the registration
questions included.

For more information and to register
please follow this [link](#)

Further Information

Contacts for Incident Reporting- Updated Process

- To report any patient safety concerns regarding York and Scarborough Teaching Hospitals NHS Foundation Trust, please complete and submit this [form](#). For York Hospital please send to yhs-tr.s2s@nhs.net or for Scarborough Hospital to freya.oliver@york.nhs.uk. This will allow the Trust to continuously receipt, acknowledge and investigate these concerns.
- To make a complaint or to highlight any concerns regarding Yorkshire Ambulance Service NHS Foundation Trust, please email vas.patientrelations@nhs.net. Please find through this [link](#) a template which you are able to complete, which will ensure they have all the information required to investigate.



Introducing our new Become a Care Home Friend Challenge!

My Home Life England have created an exciting 10 week challenge for young people aged 5-14. Through completing fun activities each week, they will:

- Learn about care homes and the people that live and work in them
- Make/write something to share with a nearby care home
- Think more about different ages and different generations

At the end they will earn their very own Care Home Friend certificate. The Challenge starts on 25 April in Global Intergenerational Week and

ends in Care Home Open Week. Activities have been written by teachers and are tailored to Key Stages 1, 2 and 3. Please share with anyone who might be interested. They would particularly encourage schools to take part. Further information on the challenge can be found through this [link](#).

This bulletin is produced by NHS Vale of York Clinical Commissioning Group.

Do you have.....

- **thoughts or comments to share?**
- **news that you would like to feature in the bulletin?**
- **items to be discussed at the next Partners in Care Meeting?**

If so please contact sam.varo@nhs.net