

Nursing Placements for York St John University

Dr Ros Brownlow, Nursing Programme Lead
r.brownlow@yorksja.ac.uk Tel: 01904 876386

Est.
1841

YORK
ST JOHN
UNIVERSITY



About York St John University

York St John University Values

Intellectually generous, curious and rigorous

Promote fairness and challenge prejudice

Inspire and support each other to succeed

We are a University of Sanctuary

Converge: Education for Recovery

The Military Human

Institute for Social Justice Research

Professor for Emotional Intelligence in Care





Nursing programme aims

- We provide students with an outstanding educational experience
- We enable students to become compassionate, competent, and confident nurses capable of leading safe, evidence-informed person-centred care
- Our students will make a positive contribution towards the health and wellbeing of people from diverse communities across their lifespan.
- On completion of their nursing degree, our students will be eligible to register as a nurse with the Nursing and Midwifery Council, the professional regulatory body for nurses and midwives and practice as a registered nurse.

Est.
1841

YORK
ST JOHN
UNIVERSITY

Nursing

[BSc \(Hons\) Nursing \(Adult\)](#)

[BSc \(Hons\) Nursing \(Mental Health\)](#)

Est.
1841

**YORK
ST JOHN
UNIVERSITY**



Our integrative approach to nursing

- **Whole person:** We take an integrative approach to nursing which focuses on the person as a biopsychosociospiritual being with the capacity for health and healing.
- **Nursing is person centred and relationship based**, emphasising inclusivity and togetherness, so we look for placements to help students work in partnership with people from diverse communities
- **Practical focus:** students will develop clinical skills and therapeutic presence by working in our simulated ward environment before they access clinical practice placements.
- **Evidence-Based:** Integrative nursing is informed by evidence, so we teach students to use the full range of therapeutic interventions skilfully, and we support them to actively engage in research.
- **Reflective Professional:** Integrative nurses are self-aware, so we coach students to reflect on your experience and set goals for their development.
- **Self-Care:** Integrative nursing focuses on the health and wellbeing being of those who give care as well as those they support, so we teach students practical self-care skills to help them flourish in the face of challenges.

Est.
1841

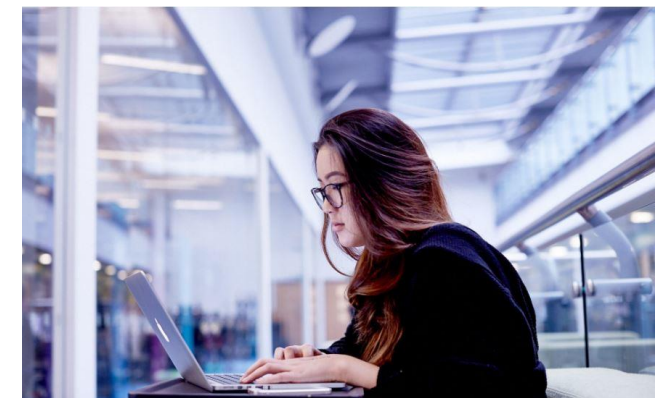
YORK
ST JOHN
UNIVERSITY

Our fantastic facilities

- **Newly developed clinical skills facilities**
 - Simulated hospital ward
 - Simulated home setting
 - New simulation development in progress for Sept 2022
- **Technology enhanced learning**
 - Electronic Portfolio to support practice learning
 - Medicines calculation and administration skills software to support administration in practice
 - Virtual Reality Nursing to support skills rehearsal in practice
- **Resources**
 - Online nursing subject guides
 - Extensive range of nursing eBooks and eJournals
 - Spacious, well stocked library on our beautiful campus in York city centre.

Est.
1841

YORK
ST JOHN
UNIVERSITY



Module Streams in The BSc (Hons) Nursing Programmes

Stream	Modules		
	Yr1	Yr2	Yr3
Integrative Nursing Science and Skills Stream	Human Science for Integrative Nursing,	Integrative Nursing for the Person with Health Challenges	Leading Care for the Person with Complex Needs.
The Reflective Professional and Academic Practice Stream:	The Professional Nurse in Contemporary Health Care,	Researching Whole Person Nursing	Contributing to Knowledge for Whole Person Nursing.
Health and Wellbeing Stream:	Assessing Whole Person Health	Optimizing Wellbeing Through Integrative Nursing	Integrative Nursing for Global Health
Nursing Practice Stream:	Nursing Practice 1	Nursing Practice 2	Nursing Practice 3



Our approach to assessment

Our assessments are relevant to your nursing practice role. Each year you will complete one of the following:

- **A practical:**
 - Demonstrate whole-person nursing assessment and care in the clinical learning unit
- **An online exam**
 - Demonstrate your medicines management skills using specialist software
- **A presentation**
 - Tell us about people you have been working with and caring for
- **A written assignment**
 - Reflect on your professional practice and on health care systems and society or write a research report.
- **A work-based assessment**
 - Demonstrate your nursing skills to your supervisor and assessor in clinical practice.

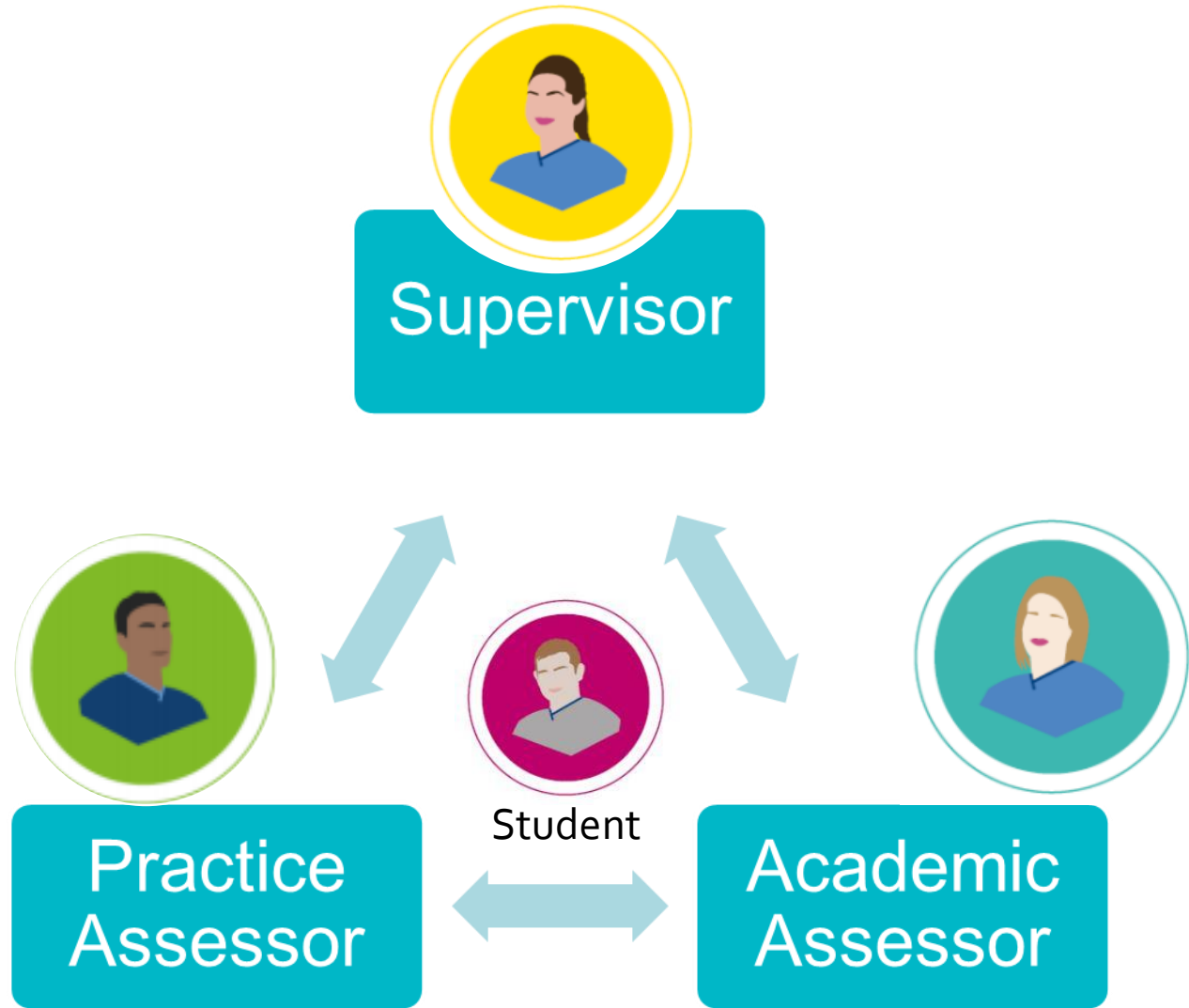
Our academic assessors support students in their placement area

They work in partnership with practice assessors and practice supervisors in placement

We can provide support and training for practice assessors and supervisors.

[Nursing Practice Placements Website](#)

[Using Pebblepad Portfolio](#)



Older person's care placements

We are seeking older persons placements across the region

We are looking for placements that can offer whole person care experiences

We would like students to contribute to the health and wellbeing of older people in the care home setting

We are looking for care home partners to work with us and our students.



Est.
1841

**YORK
ST JOHN
UNIVERSITY**