



**Tuesday 02 November 2021**

## What's in your Partners in Care bulletin?

This weekly bulletin provides details of training, guidance, access to past editions and lots more. There's also helpful information on the web pages dedicated to our Independent Care Provider colleagues.

[Please click here to bookmark these pages](#)



## Face Masks Reminder and Poster for Care Providers

One of the biggest ways that staff infect themselves with viruses including Covid-19, D&V etc is through contaminating themselves during removal, or through touching contaminated PPE. A common risk factor is touching face masks as we are required to wear them continually at work when in a health or care environment. We wear a face mask to prevent us from breathing in viral particles – Any airborne particles, rather than entering our nose or mouths as we breath are trapped on the outside of the face mask, protecting us but contaminating the outside of the mask. Should we then touch our contaminated

face mask, any viral particles present will contaminate our hands which we can spread to other people or objects by touch/hand contact; or we can infect ourselves by touching our eyes, nose, or mouth. It is therefore important that PPE is used correctly- and combined with good hand hygiene to be effective! If you touch your face mask for any reason, i.e eating, drinking, smoking, adjusting, scratching your face etc then you should remove the mask, dispose of it safely and perform hand hygiene before applying a fresh mask.

Please share this [poster](#) with staff to raise awareness and remember.



## **Patient Transport Services Update- Care Home Bookings**

Please find through this [link](#) an update from the Patient Transport Service. To minimise the number of people entering a care home and avoid any unnecessary cancellations, they are asking for crews to meet at the door when residents are mobile where possible and for staff to identify when booking if a resident is being taken to/from a care home setting so fully vaccinated crews can be sent.

For any queries around this update please contact [YAS.PTSMessages@nhs.net](mailto:YAS.PTSMessages@nhs.net)



## **Oliver McGowan LD and Autism Training Trial**

The Oliver McGowan training trial applicable to all staff in health and social care will run from September to November 2021, giving certification to participants who complete it. This trial is part of the development of this course by Health

Education England and Skills for Care to ensure all staff receive LD and autism training appropriate to their role.

- Tier One is for all people working in health and social care, including those in admin and managerial positions. It consists of 2 components, taking around 4-5 hours in total. To sign up to start Tier One certification please click [here](#)
- Tier Two is for frontline health and social care providers only, and consists of 4 components, taking around 8 hours in total. If you have completed your Tier One training you can sign in to begin your Tier Two training. It is envisaged that there will be the opportunity to complete the Tier Two training face to face in a classroom.

Please be aware that due to high demand it can take up to 48 hours after initial registration to activate your online profile.

For more information email [bildtrial@bild.org.uk](mailto:bildtrial@bild.org.uk) or visit [www.olivermcgowan.org](http://www.olivermcgowan.org) to learn more about Oliver's story.

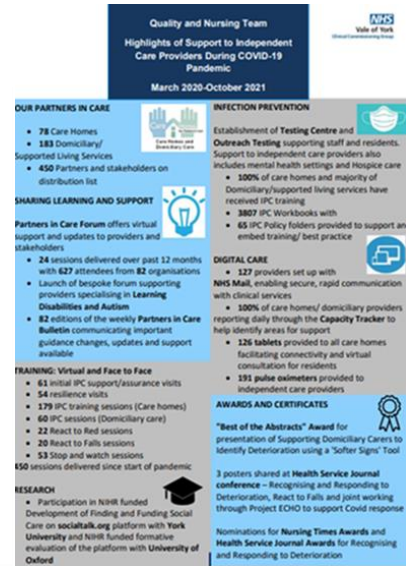
## **Void PCR Tests Reminder**

We've aware that providers are still having issues with PCR tests being declared void, a reminder than any tests that have passed their expiry date will be automatically declared as void by NHS Track and Trace when received into labs. These expiry dates can be found on the box they are delivered in and sometimes the exterior plastic bag and vial. If you think you have been sent kits that have already expired, then please send an email with a photo attached of expiry dates on the box, the packet and the vial to [carehometesting@dhsc.gov.uk](mailto:carehometesting@dhsc.gov.uk).

## Need to know

### Quality and Nursing Team Support to Care Providers During COVID-19 Pandemic Infographic

Our team have produced and updated infographic showing the support we have provided to care providers through the challenges of the last 18 months. This has included delivery of over 450 training sessions and support visits, allocation of 320 devices to support digital communication, 3800 IPC booklets to embed training and 82 bulletins and 25 forums to share guidance and updates with providers. A full-size version can be found through our website by clicking the picture.



### Partners in Care Virtual Forum

Partners in Care Virtual Forum will take place **Thursday 04 November from 2.00-2.45**. These sessions are designed to provide support with the latest guidance, updates from across health and social care and a chance to ask questions of both health professionals and fellow care sector colleagues. The group is shaped by our care providers, so if you have anything you would like to raise for this meeting please get in touch. All care providers and partners agencies are welcome at the forum, please contact [sam.varo@nhs.net](mailto:sam.varo@nhs.net) if you don't have the calendar invite.

### British National Formulary App- Now Available on Care Provider Tablets

Providers with CCG Samsung "Tab A" tablets will now be able to access the British National Formulary app, which allows easy access to up to date guidance

on prescribing, dispensing and administering medicines. To install this you will just need to click the "F4IT" Icon which shows a list of all apps available to be downloaded. For any other apps providers would like to request for these tablets please contact [sam.varo@nhs.net](mailto:sam.varo@nhs.net).

## **COVID-19 Vaccination Letter for Tradespeople and Volunteers**

The Department of Health and Social Care (DHSC) has produced a letter to help providers to share vaccine information to tradespeople and external contactors and communicate that anyone working or volunteering in a CQC regulated care home must have received a complete course of a COVID-19 vaccination (not including boosters), unless they are exempt. This is hosted on their dedicated webpage along with other resources and information to help providers navigate this legislation. To view these resources please follow this [link](#).

## **Learning and Development Opportunities**

### **Supporting People with Learning Disabilities to Use Everyday Technology- An Introduction to a New Toolkit**

**When: Thursday 4 November 2.00-3.30**

Many of us know the importance of being able to use technologies such as smartphones, tablets, WhatsApp and Zoom to keep connected with our friends and family and complete everyday online life tasks. Some people who work in social care, helping people with learning disabilities have found this a challenge and many have realised they need help to develop their skills, knowledge and confidence in this area. The Open University will show us a new free toolkit for those who manage services, supervise carers and support staff to understand what



### **Using Technology to Include and Involve People to Have Better Outcomes for Everyone**

**When: Friday 5 November 10.30-12.30**

Last year we've all learnt how advances in technology have helped us all to connect with each other in a more human way than it has in the past. This conference will highlight the good things but also look at how we can get a balance of old and new as we move forward into a more settled way of life. It will cover a range of topics including 'Tips to support people when using online platforms Toolkit' which was commissioned by Skills For Care and

is needed in order to provide good support for people with learning disabilities to access and use technologies (Including case studies and examples of good support in practice).

To register please follow this [link](#)

Coproduced by ACE Anglia Leading Lives and Dimensions.

To register please follow this [link](#)

## Further Information



### COVID Booster Vaccinations for Frontline Health and Care Staff

The national booking portal is now live for frontline health and social care staff to book their COVID-19 booster doses. Staff will only be able to book if 6 months (180 days) have passed since your second dose vaccination, and will be asked to take a form of work ID with them to the appointment. To book please follow this [link](#). If you've had positive COVID-19 test you must wait 4 weeks (28 days) from the date of the test result before booking



### Role of Multidisciplinary Teams in Enhancing the Health of Care Home Residents

A [new animation from NHS England and NHS improvement has been launched](#) for all health and social care professionals working in multidisciplinary teams (MDTs) involved in improving patient care in care homes. Shown through resident Magdalena's eyes, we find out how health and care home professionals can work collaboratively to improve the health of their residents and to plan proactive and personalised care.

**This bulletin is produced by NHS Vale of York Clinical Commissioning Group.**

## **Do you have.....**

- **thoughts or comments to share?**
- **news that you would like to feature in the bulletin?**
- **items to be discussed at the next Partners in Care Meeting?**

If so please contact [sam.varo@nhs.net](mailto:sam.varo@nhs.net)