



PATH

Paediatric Ambulatory
Treatment Hub

Information for clinicians

The Paediatric Ambulatory Treatment Hub is managed by a team of experienced professionals including a paediatric nurse, GP, Advanced Clinical Practitioner with remote support from a paediatric consultant.

Open: Mon – Fri 14.30-20.30

Appt length: 40 minutes (plus 1h observation time if needed)

Location: Health Village, Askham Bar

The aim of the clinic is to ensure parents have the knowledge, skills and confidence to care for their child at home, while also identifying children that require the additional observation, oxygen supplementation and feeding support that the hospital can provide.

Please provide patients with a digital information leaflet about their condition and provide verbal safety netting advice about 'red flags' Also send the parent PATH leaflet contains important location and contact information.



Eligibility Criteria

- Respiratory illness
- Presence of amber features on severity score
- Consultation (telephone or face-to-face) with a primary care practitioner (e.g. PA, ACP, GP)
- Age 3m up to 5th birthday
- Registered with Nimbus member practices



Exclusion Criteria

- Presence of red features on severity score, emergency medical help should be sought
- The patient has not already received a consultation within primary care
- Child has open access to the paediatric department
- On home oxygen or breathing assistance, e.g. CPAP
- Age <12 weeks (corrected)
- Premature birth, under 32 weeks gestation and age less than 9 months
- Re-attendance within same illness episode
- Child or person accompanying the child tested positive for COVID 19 and still in isolation period
- First presentation of wheeze



If you are unsure whether your patient would be suitable for PATH you can seek further advice from the on-call paediatric consultant on 07076319551.

Nimbus member practices

Dalton Terrace Surgery

Dalton Terrace, York

Haxby Group

2 The Village, Wigginton, York

Old School Medical Practice

Horseman Lane, Copmanthorpe, York

Unity Health

Kimberlow Rise, York

Elvington Medical Practice

York Road, Elvington, York

Jorvik Gillygate Practice

Woolpack House, The Stonebow

Pocklington Group Practice

1 Amos Drive, Pocklington, York

York Medical Group

199 Acomb Road, York

Front Street Surgery

14 Front Street, Acomb, York

Priory Medical Group

Cornlands Road, Acomb, York

MyHealth - Strensall Health Care Centre

Southfields Road Strensall York

Amber Criteria



Activity

- Altered response to social cues
- No smile
- Reduced activity



Skin

- Normal skin colour
- Pallor reported by parent/carer
- Cool peripheries



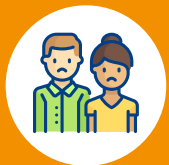
Respiratory

- Tachypnoea
- Moderate chest recessions
- May have nasal flaring
- <12m: 50-60bpm
- 1-5y: 40-60bpm
- O2 Sats: 92-94%
- Stridor at rest with barking cough
- Decreased air entry with wheeze



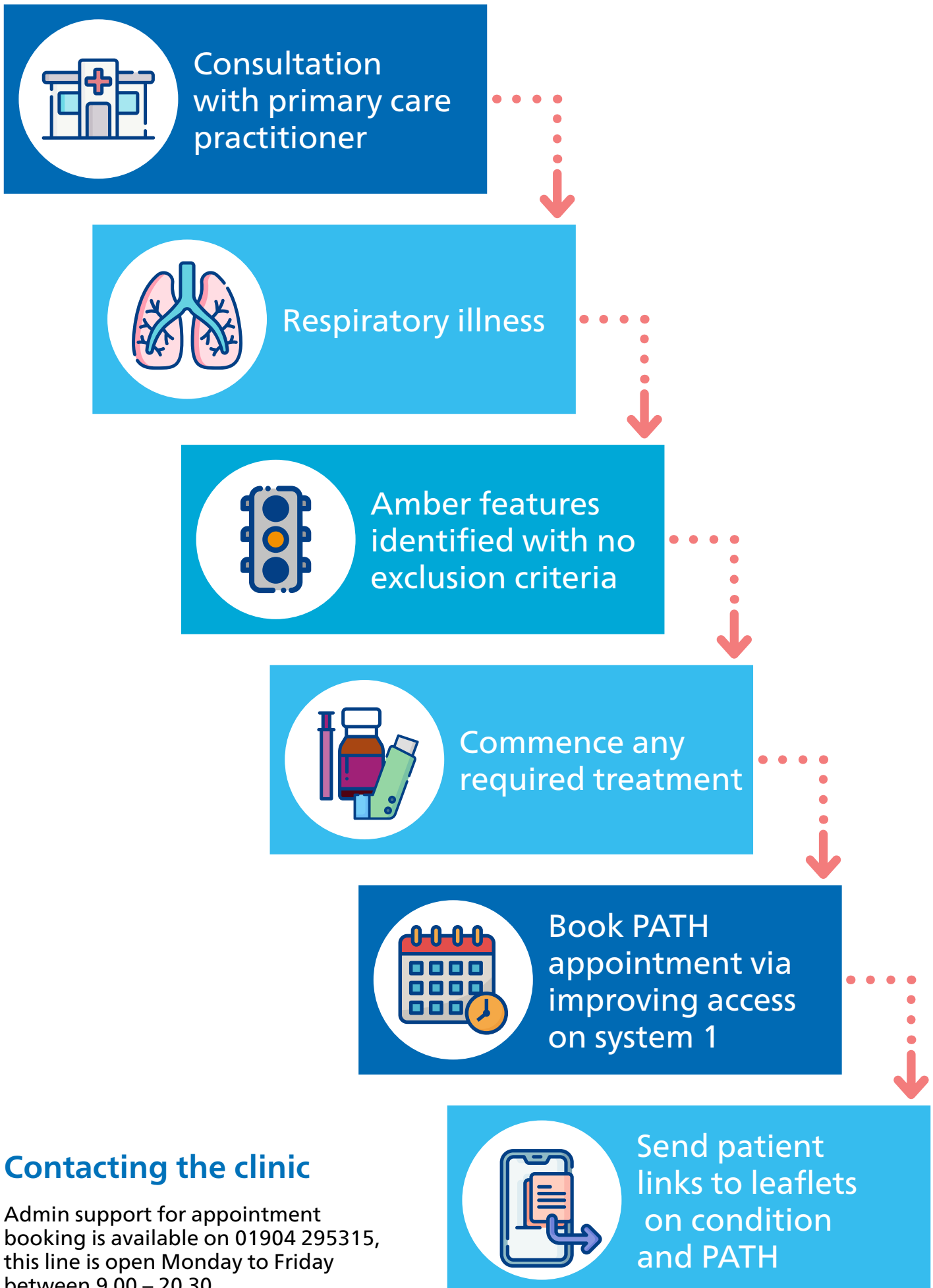
Circulation

- 50-75% fluid intake over 3-4 feeds
- Cough induced vomiting
- Reduced urine output
- 2-5y: >140bpm

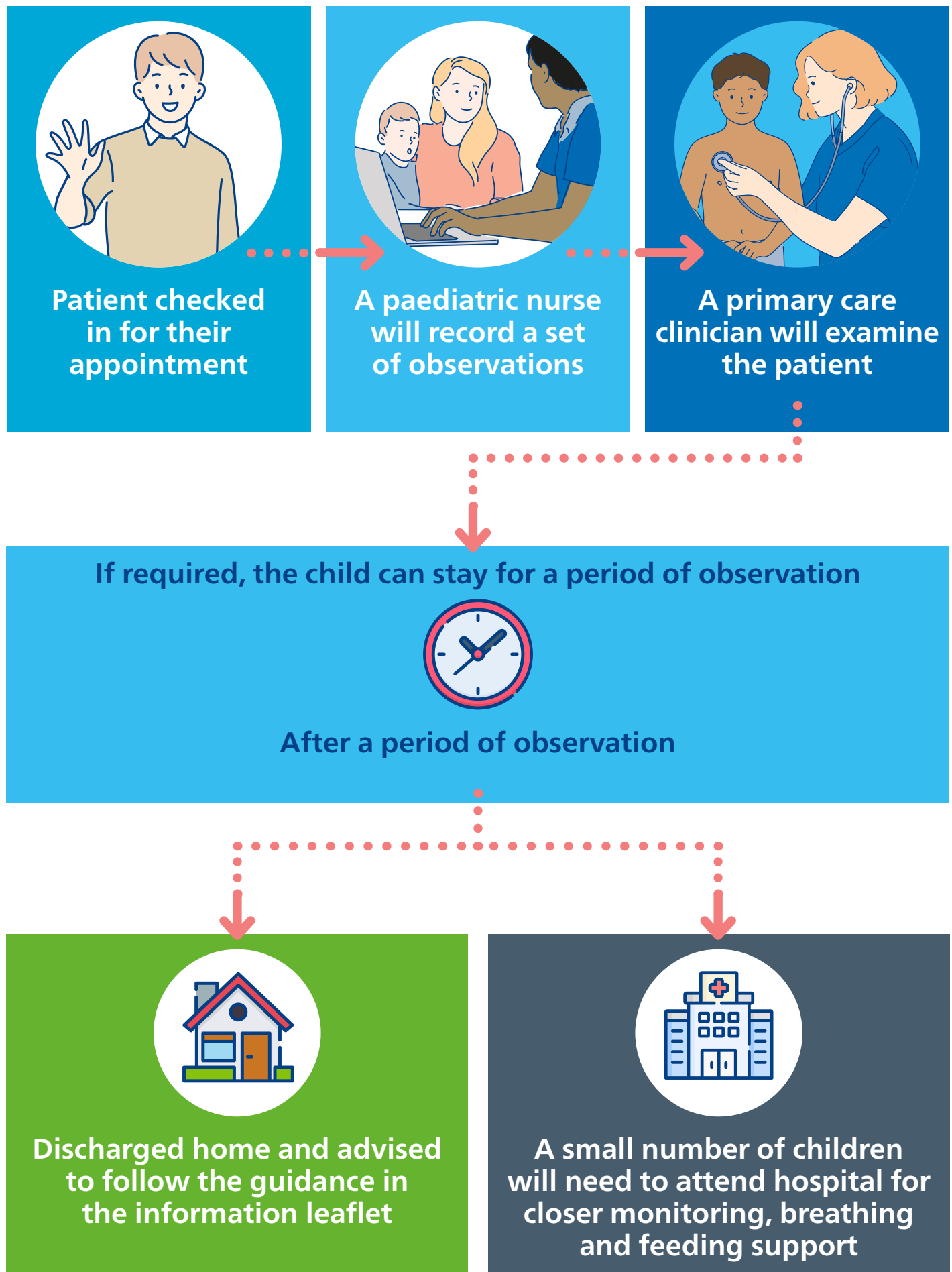


Parental concerns

Booking into PATH



What will happen at the clinic





Learning Resources: Respiratory Surge in Children

There are a range of resources available for all healthcare professionals via e-learning for healthcare



tinyurl.com/respsurge