



Monday 27 September 2021

What's in your Partners in Care bulletin?

This weekly bulletin provides details of training, guidance, access to past editions and lots more. There's also helpful information on the web pages dedicated to our Independent Care Provider colleagues.

[Please click here to bookmark these pages](#)

Message from the Author- Unfortunately I have discovered a serious email issue which over the last 2 weeks has prevented emails from/to non NHS accounts being recieved. Therefore if you have contacted me and not received a response please accept my apologies. These issues have also affected this bulletin and the Partners in Care Forum also, so we have consolidated the information shared at those within this bulletin for you. This issue has now been resolved so if you are awaiting a response please resend to sam.varo@nhs.net.

Update Regarding Voided or Expired Test Kits by NHS Track and Trace

A number of providers have had issues where expired tests submitted have been declared as void by NHS Track and Trace when received into labs. Please find guidance circulated by them below to help providers identify any expired test kits.

If you think you have been sent kits that have already expired, then please send an email with a photo attached of expiry dates on the box, the packet and the vial to carehometesting@dhsc.gov.uk.

1

Check the box the tests were delivered in

The expiry date will be printed on a label affixed to the larger cardboard box that your tests are sent in.



2

Check the exterior plastic bag in each test kit

An expiry date may be printed on one of the plastic bags. Look out for the egg-timer symbol.

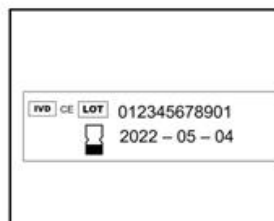


2022 - MAY - 04

3

Check the vial

Expiry dates are added to some of the vials but not all. Look out for the egg-timer symbol.



Need to know



Skills for Care Workforce Development Fund 2021-22

The Workforce Development Fund for this year is now open to adult social care employers in England to support the development of their staff at all levels, offering funding for a wide range of qualifications, learning programmes and digital learning modules. This year the WDF will continue to provide enhanced funding for completion of leadership and management qualifications, learning programmes and digital learning modules. The funding will support registered managers and other frontline managers with their Continuing Professional Development (CPD) Certification, ensuring that they're able to access learning opportunities to continue to develop their knowledge and skills to effectively lead

and support the workforce. Additional priorities may also emerge during the year in response to COVID-19 recovery.

For more information please follow this [link](#)



Partners in Care Good News- Stories from Summer

At Partners in Care recently, we shared some of the many good news stories from our care providers in how they have supported those in their care despite the difficult circumstances over the summer months. To see the full slides please follow this [link](#), but highlights include:

- Staff and residents getting into the sporting spirit to cheer on England during the Euro's and Olympics
- Awards for both Care mUm and Blossom Care Tadcaster in the Yorkshire and Humber Round of the Great British Care Awards.
- Virtual skydiving for residents at Grimston Court as part of an awareness week to support the British Heart Foundation
- Connaught Court organising a special balloon ride for a resident who played a vital role on D-Day
- Home Instead working with Barclays Digital Eagles to support clients with digital skills.
- Somerset House getting into the Hawaiian spirit to keep residents hydrated
- Support workers at Avalon Care helping a client to create a Toy Story drinks table and stormtrooper loo roll dispenser.

Training and Development Opportunities

Embedding a Wellbeing Culture in the Adult Social Care Workforce Webinar

**When: Thursday 30 September 2021
10:00 – 11:00**

Care and Health Improvement Programme (CHIP) are hosting a webinar about what is meant by a culture of wellbeing, with examples of actions that can support wellbeing at the personal, managerial, organisational and community level. There will be a chance to hear from those who have taken successful steps in embedding a culture of wellbeing in their organisations at all levels and attendees will be encouraged to share good practice.

To register please follow this [link](#)

Webinar: CQC Monitoring, Inspection and Smarter Regulation

When: Tuesday 05 October 10.00-10.30

This webinar, delivered in partnership with CQC, looks at how monitoring, inspection and support is evolving as the regulator implements their new strategy and smarter regulation. The webinar provides the opportunity to learn more about current CQC processes and what further changes on the horizon. This webinar is aimed at frontline managers, quality and compliance leads and others involved in preparing for the service for CQC monitoring and inspection. Skills for Care will also be sharing insight into our own resources and future plans to enable you to continue to deliver good and outstanding care.

To register, please follow this [link](#)

Further Information



Capacity Tracker Updated Questions and How is Your Data Used?

Following on from the changes that have recently come into place to reduce number of questions for providers as well as prepare for the upcoming flu and COVID booster programmes, we have pulled together these slides detailing the change. Following feedback from providers we have also included an overview of how the data providers submit is used, as well a chance to see what the data your CCG/local authority see looks like and how it is important to helping us to provide support as well as get a overview of any area trends. To see these slides please follow this [link](#).



Reporting Patient Safety Concerns for Providers-Reminder

York and Scarborough Teaching Hospitals NHS Foundation Trust have earlier in the year, agreed a new process for reporting patient safety concerns about the Trust. By sending through to this dedicated generic email, it will allow the Trust to continuously receipt, acknowledge and investigation the patient safety concerns of our neighbouring organisations. Please send your patient safety concerns that involve the trust to: yhs-tr.s2s@nhs.net

This bulletin is produced by NHS Vale of York Clinical Commissioning Group.

Do you have.....

- **thoughts or comments to share?**
- **news that you would like to feature in the bulletin?**
- **items to be discussed at the next Partners in Care Meeting?**

If so please contact sam.varo@nhs.net