

Enabling Research in Care⁺ Homes



Carla Bratten - Agile Research Team Senior Nurse



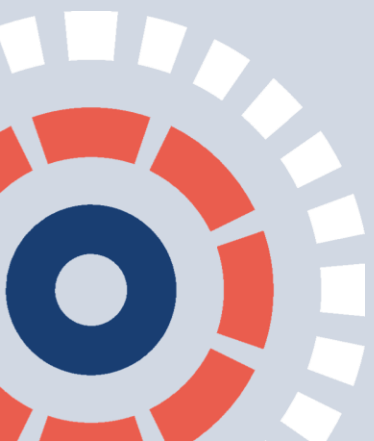
National Institute for Health Research



What is ENRiCH?

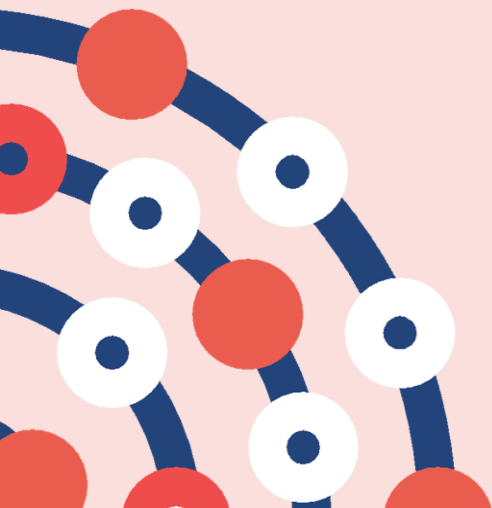


- Enabling Research in Care Homes
- Set up in 2014
- ENRICH brings together care homes, residents and researchers to support the delivery of research.
- Holds a database of **'Research Ready'** care homes



Why join up?

- Encourages residents to take an increased interest in their own health and wellbeing
- Allows residents to feel they are contributing to the future
- Stimulates residents with something new to do and someone new to talk to
- Provides learning development for staff
- Offers improvement opportunities for the home

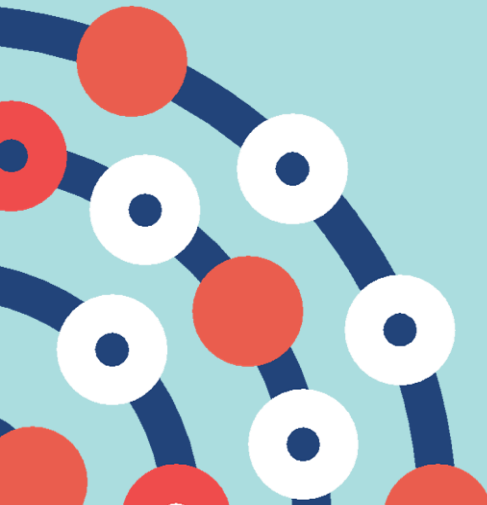
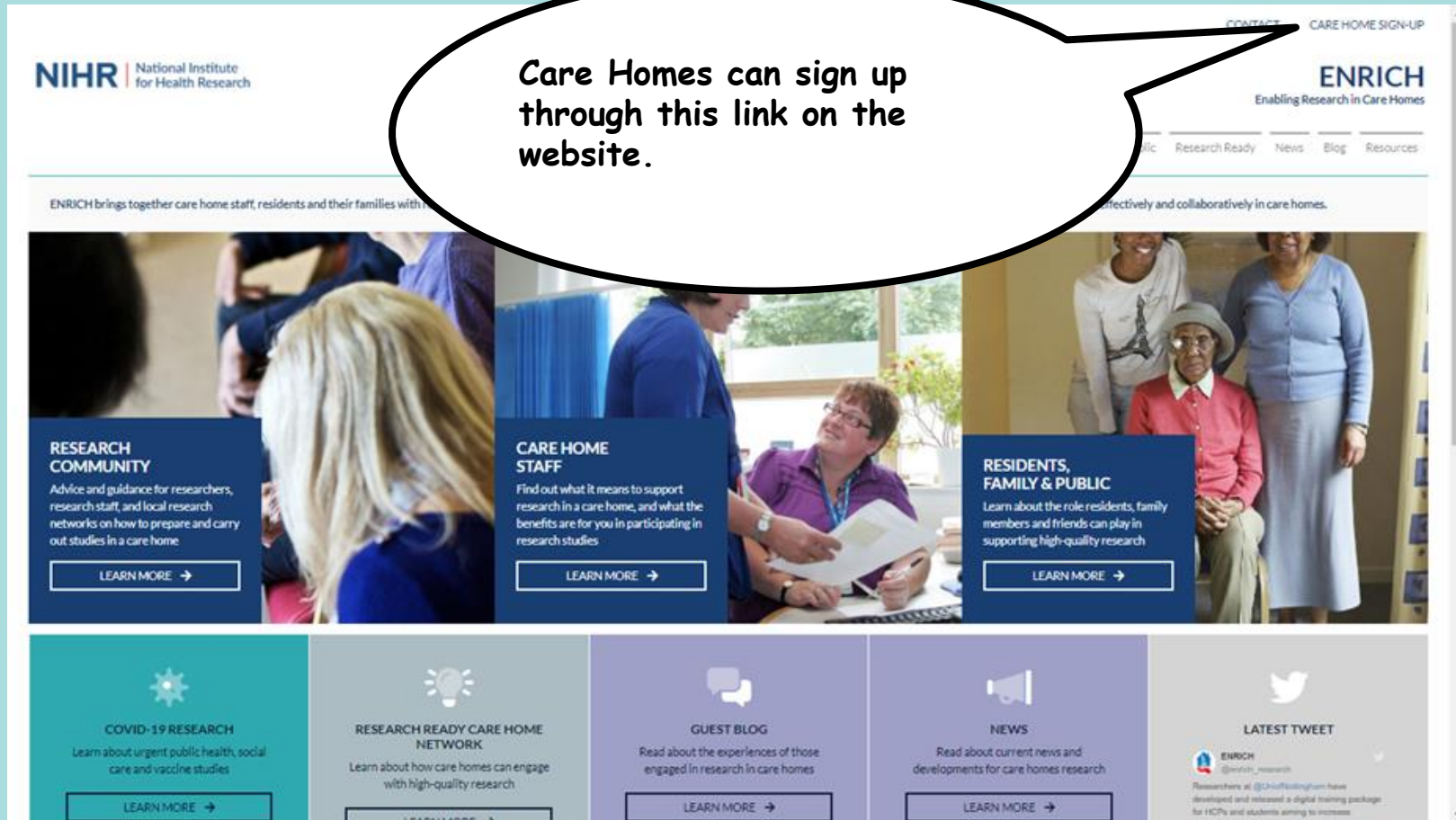


How do I join the ENRiCH register?

ENRICH Website [here](#)

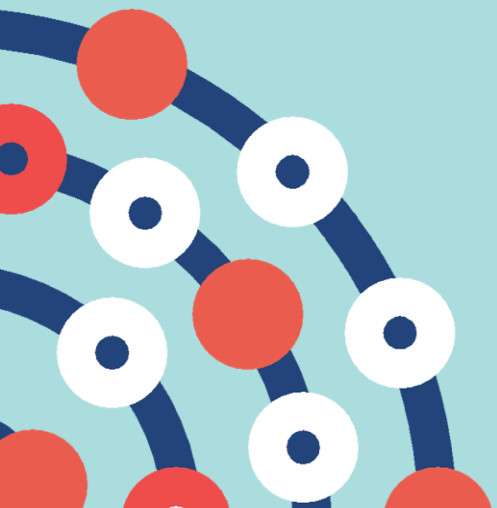
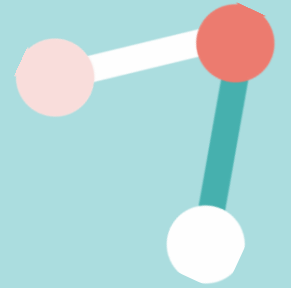


Care Homes can sign up through this link on the website.



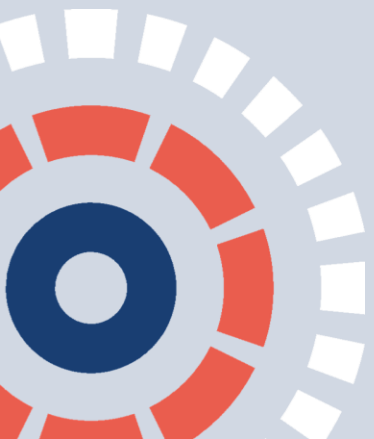
Ways to get involved

- ❖ Early Engagement and PPI groups
- ❖ Feasibility
- ❖ Questionnaires.
- ❖ Interviews
- ❖ Interventions



Ethics and Consent

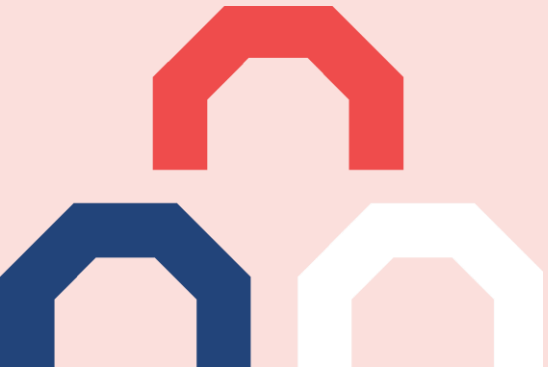
- ❖ All research undertaken in care homes must be approved by an ethics committee and meet the legal requirements outlined in the Mental Capacity Act 2005.
- ❖ Types of ethical approval is dependent on the research study.
- ❖ All participants must sign a consent form.
- ❖ Those who lack capacity can take part if ethically approved.



Study examples



- ❖ **BHiRCH**
- ❖ **PRINCESS**
- ❖ **VIVALDI**
- ❖ **PROTECT**



Current Studies

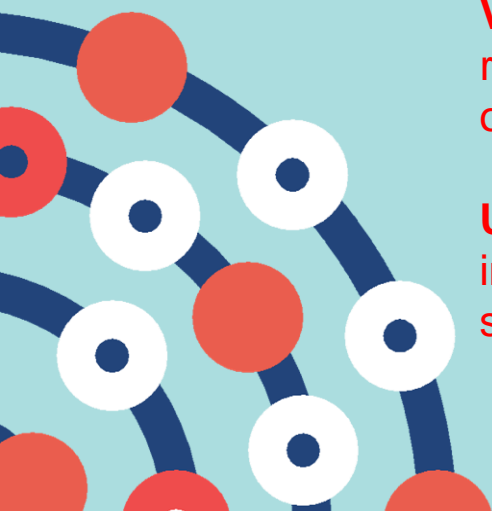
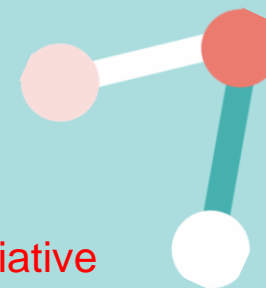
Online surveys for Care Home staff to complete

CovPall – online survey for all staff involved (10-15mins) exploring the provision of palliative and end of life care in Care Homes. Please also see our study [website](#).
To take part please click on this link <https://tinyurl.com/537vy3yk>

DACHA - online survey (10-15min) regarding data collection processes from Care Homes. The survey is for one member of staff per Care Home. If you would like to take part in this survey please: [Click this link to access the survey](#)

VISIT-ID - online in-depth survey for a nominated senior staff member (20-30mins) regarding visiting policies and requests the provision of your visiting policy. The link to the online survey is: <https://www.lse.ac.uk/cpec/visitid>

Use of Antipsychotics with residents suffering with dementia - online survey for all staff involved (15mins) to share their views. This is the link to our survey: <https://reading.onlinesurveys.ac.uk/adaq-questionnaire-version-3-copy>

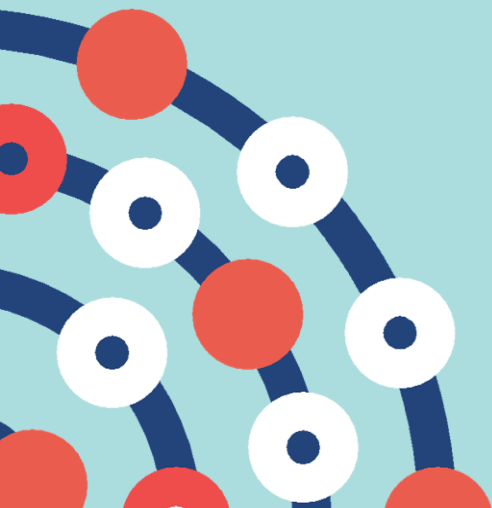
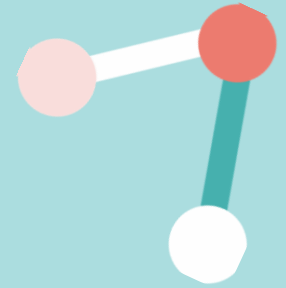


Current Studies

A Study from Leeds University, investigating whether the use of wearable digital contact tracing technology (eg bracelet or fob) is more effective than traditional tracing methods (NHS test-and-trace) within a care home setting.

Here is a useful link to the website CONTACT Website (<https://ctru.leeds.ac.uk/contact-trial/>).

If you are interested in taking part, please contact the study team directly on contact-trial@leeds.ac.uk





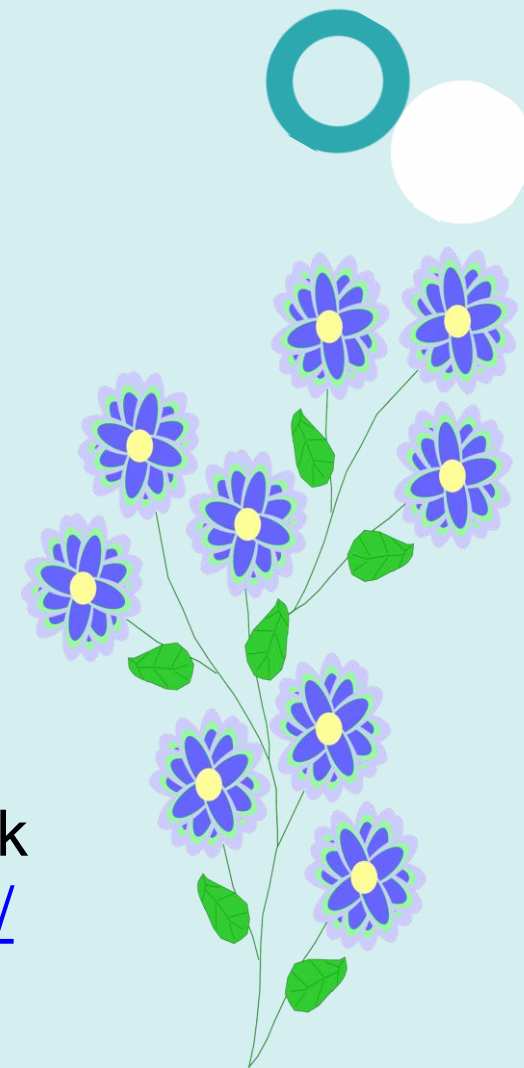
Join dementia research

What is Join Dementia Research?

Partnership between the NIHR, Alzheimer Scotland, Alzheimer's Research UK and Alzheimer's Society.

Database where people can register their interest in taking part in dementia research

Find out more about Join Dementia Research click here <https://www.joindementiaresearch.nihr.ac.uk/>



Thank you for listening

Any questions?

carla.bratten@nihr.ac.uk

