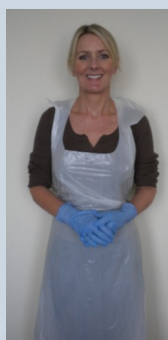


Cleaning a commode pan manually for Care Home settings

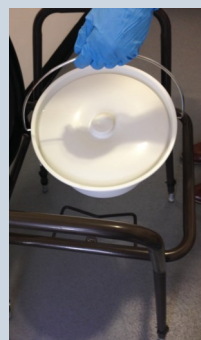
Always use:

- Disposable cleaning cloths and dispose of when contaminated
- 1,000 ppm chlorine-based disinfectant solution, e.g. 50 ml of Milton in 1 litre of cold water

Follow your local 'Safe disposal of waste Policy' for appropriate waste stream to be used.



1. Wash hands thoroughly with liquid soap, warm running water, dry with paper towels and dispose of. Then put on disposable apron and gloves.



2. Carefully remove the pan from the commode to avoid spilling the contents.



3. Empty the pan contents into the toilet.



4. Place the pan into a bucket of detergent and warm water.



5. Wash the outside then inside of the pan and dry with disposable paper towels. Dispose of cloth and paper towels.



6. Wipe the outside then inside of the pan with the chlorine-based disinfectant solution. Leave to air dry. Dispose of cloth.



7. Remove and dispose of gloves, then remove and dispose of apron.



8. Wash hands thoroughly with liquid soap and warm running water.