

Tell us your views and opinions

Patient voices play a central role in the CCG's planning process. Views and experiences help to shape the decisions that are made about local healthcare services and this is why the CCG encourages everyone in the community to have their say.

Comments and opinions are also used to develop reports to the CCG's Governing Body, its clinical leads and senior staff giving the decision makers the opportunity to hear what local people think is important.

All information gathered by the CCG remains confidential and is used only to help shape decisions about local services. If you prefer, you can provide your views and experiences anonymously.



How to share your views

You can feedback to the CCG in several ways:

email: valeofyork.contactus@nhs.net

phone: 01904 555 870

by post: NHS Vale of York Clinical
Commissioning Group
West Offices
Station Rise
York
Y01 6GA

online: www.valeofyorkccg@nhs.net



If you need this information in another format or language, please phone 01904 555870 or email valeofyork.contactus@nhs.net

Let's talk
health

Share your
views and
experiences



Do you have an experience of health and care services that you would like to share?

Would you like to have your say about the delivery of future health and care services?

Could you help to give the local community a voice that could help to shape decisions about services?

If the answer is YES, then NHS Vale of York Clinical Commissioning Group (CCG) wants to hear from you.

write
email
phone

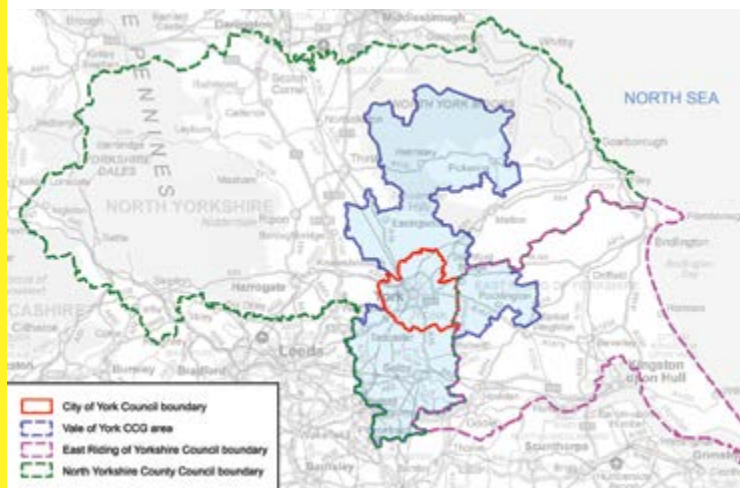


About the CCG

The CCG is the statutory body responsible for commissioning (improving and procuring) healthcare services for patients across the Vale of York.

Led by a number of local GPs and other health professionals, the CCG is best placed to understand the needs of local patients. It represents patients registered with 30 GP practices that are located across the wide geographical area that makes up the Vale of York. The population figure for this area is approximately 337,000.

The main acute care and community provider for the local area is York Teaching Hospital NHS Foundation Trust and the main provider of mental health and learning disabilities services is Leeds and York Partnership NHS Foundation Trust.



Your views and experiences are important

The CCG is committed to providing quality health and care services that are provided in the best place and at the right time. To ensure that it commissions services that the community needs the CCG works with patients, the public and its partners to understand and hear their opinions.

This feedback provides the CCG with a valuable insight and further knowledge that can highlight issues or hear about something that patients think is working very well.

